

A/2

ASS.
GINTO
2011

ING. ANDREA PENNARESE / 10.08.2011

235 VOLUME ADDITIONNELLES SOLITRES
PAR COTE DEMONTABLES A FIN PERMANENT
ACCES LIBRE AUX SAFLON SECON TAVOLE
CASSIE HINI 2011

235

SEZ AA

FLOTTABUTE APRIER SH

BANETTE SH

FLOTTABUTE AVANT

CLOISSE

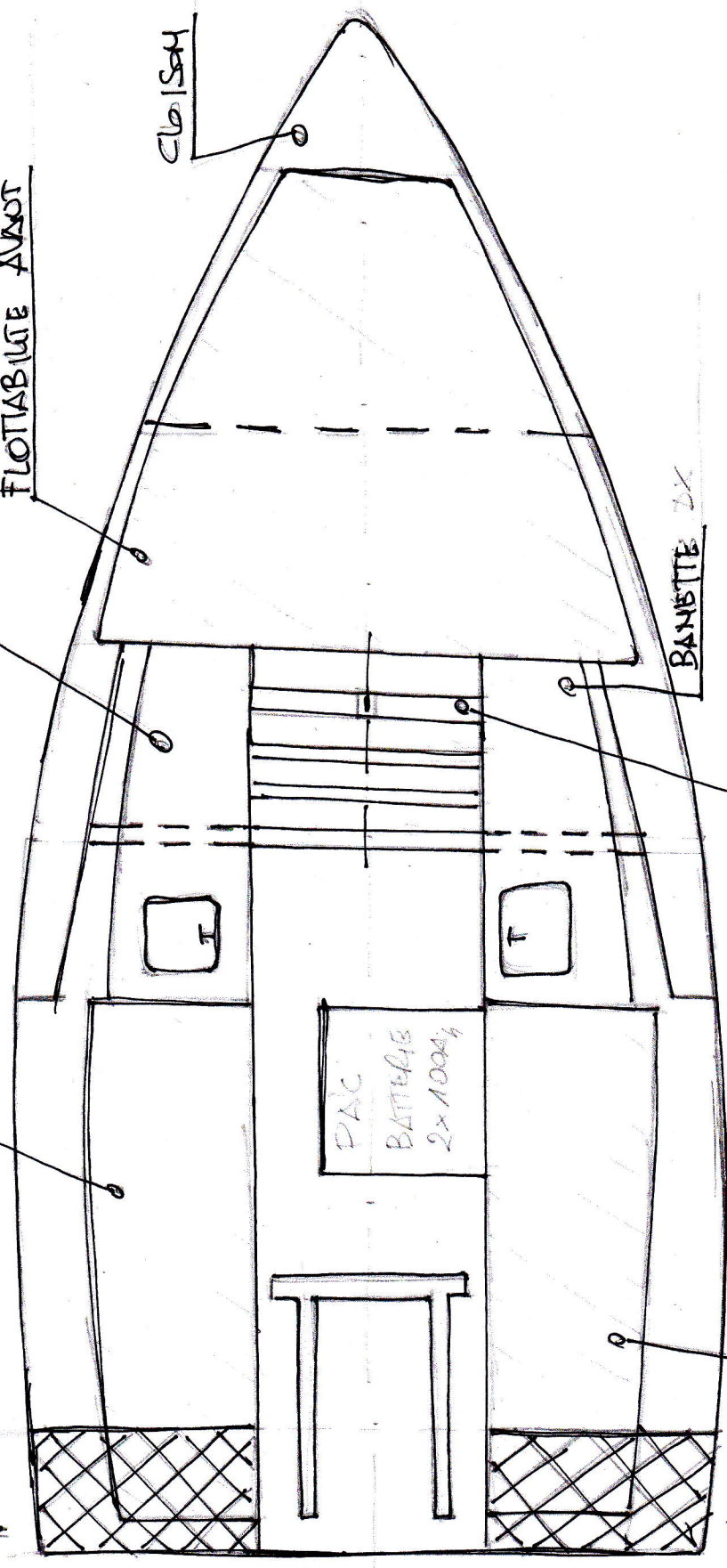
BANETTE LX

FLOTTABUTE Q

PAC
BATTAGE
2x1000L

FLOTTABUTE APRIERE LX

SEZ A/A



NOTE: 10-07-2011

HINI 650 SERIE GINTO

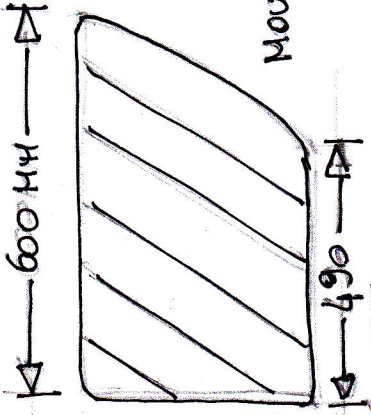
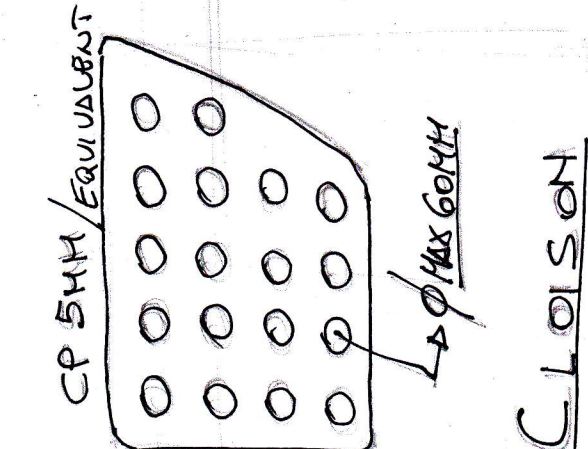
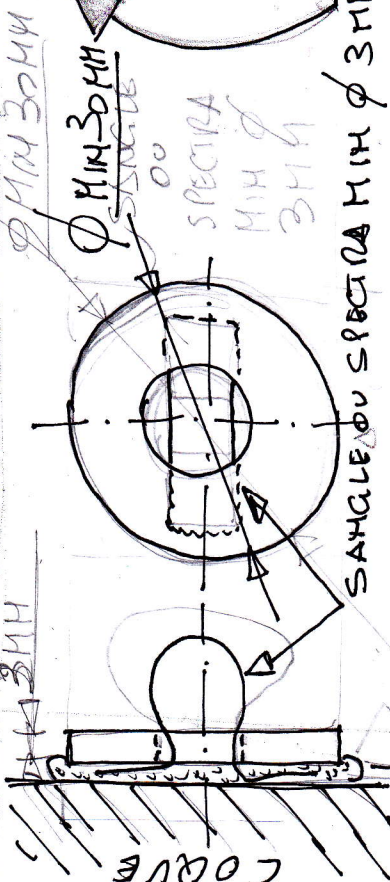
STRUCTURE PERMANENTE

VOLUME FLOTT. 1495 Lt. CASSIE HINI 2011

NOTES:

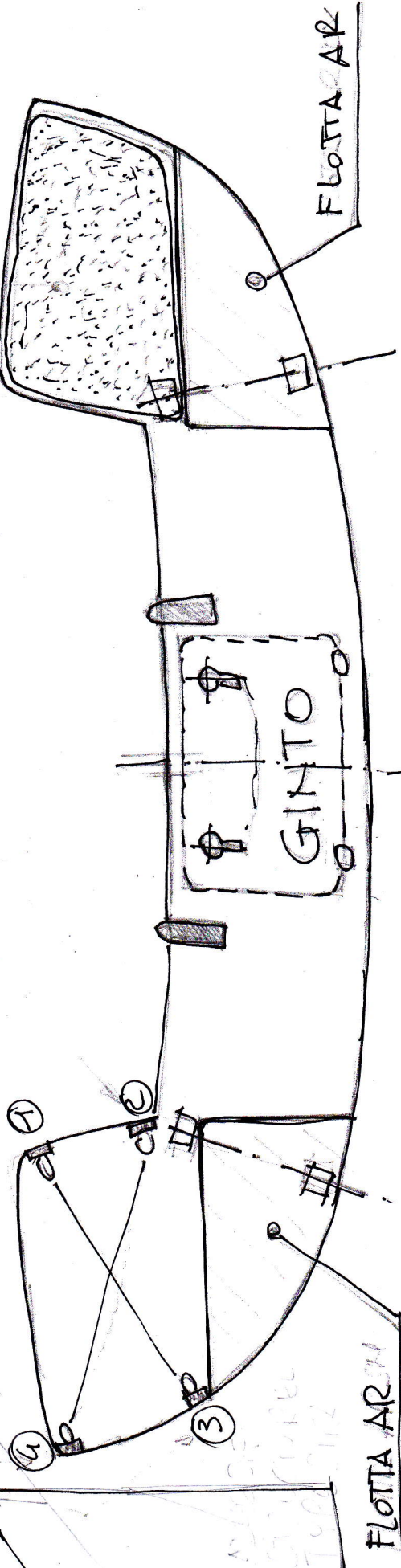
MOUSSES UTILISE CAPACITE ABSORPTION BAUX
INFÉRIEURE 5% EN VOLUME

CLOISON EN CP 5MM OU EQUIVALENT
PEINTES NIVES PAR DES SANGLES ET DES
FABRICES N° 04



2/2
A.S.S.
GINTO
2011

ING. ADRIAN PERDIBAYE / 10-08-2011



ADESIVE
STRUCTUREL TYPE SIKAFLEX 292 +
PRIMER ET PREPARATION SURFACE

SEZ A-A

NOTE: 10-07-2011

MINI 650 SERIE GINTO

MODIFICATION: VOLUME STABILITE
RUES CUSSEMINI: 06 07 2011